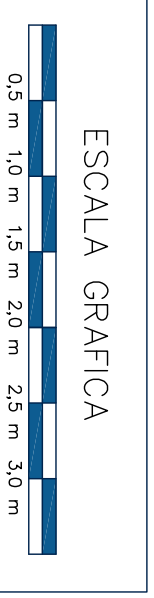
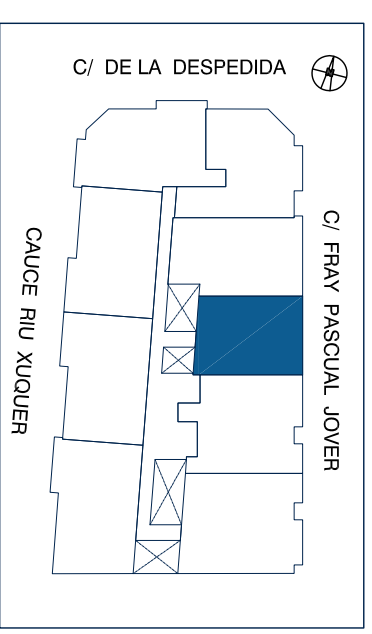


TIPO A2

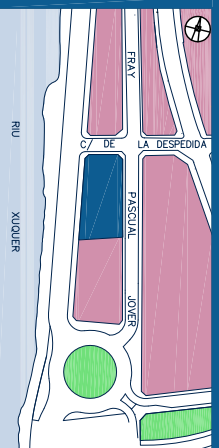
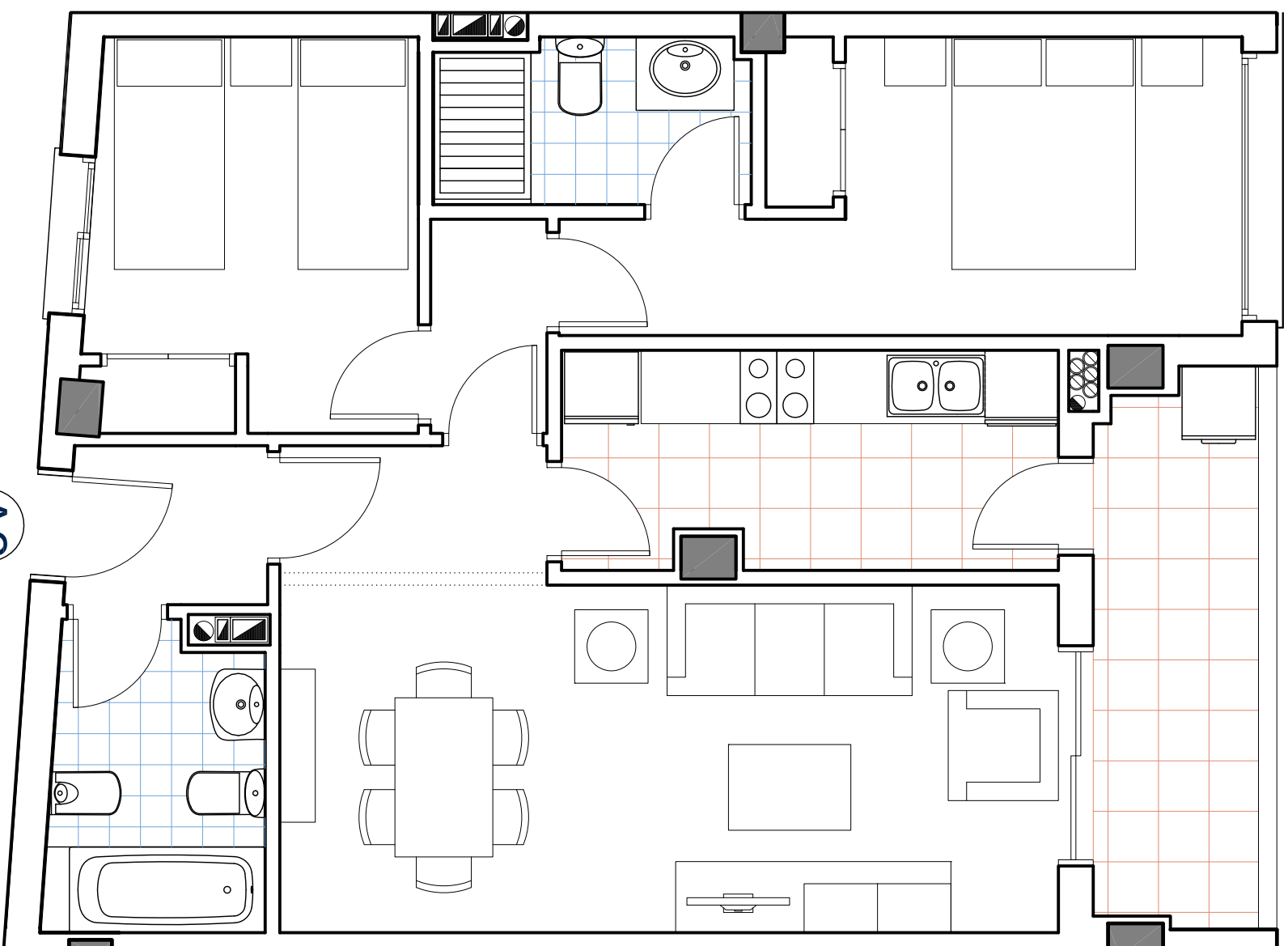
PLANTAS 1ª a 5ª

SUPERFICIES APROXIMADAS

Sup. Util	65,24 m ²
Sup. Construida s/ ele. c.	76,20 m ²
Sup. Construida c/ ele. c.	85,27 m ²
Sup. Terraza (100%)	5,95 m ²



A2



PROMUEVE

